

**CONSTRUCTION NOTES**

1. CURB R.C.B. PER DETAIL #1 HEREON
2. CURB R.C.B. PER DETAIL #2 HEREON
3. CURB R.C.B. PER DETAIL #3 HEREON
4. CURB SURFACE IN R. FORM & OVER ALUMINUM PAVEMENT
5. CURB 3" A.C. PAVEMENT OVER 6" ASPHALT BASE
6. CURB 5" A.C. PAVEMENT OVER 6" ASPHALT BASE
7. CURB 4" THICK P.C.C. UNDERLAY
8. CURB 8" P.C.C. CURB PER CITY DWG # 2371-F
9. CURB LEVEL DEPRESSION PER CITY DWG # 2301

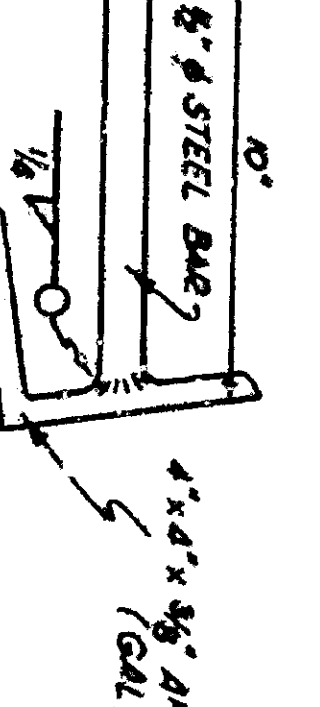
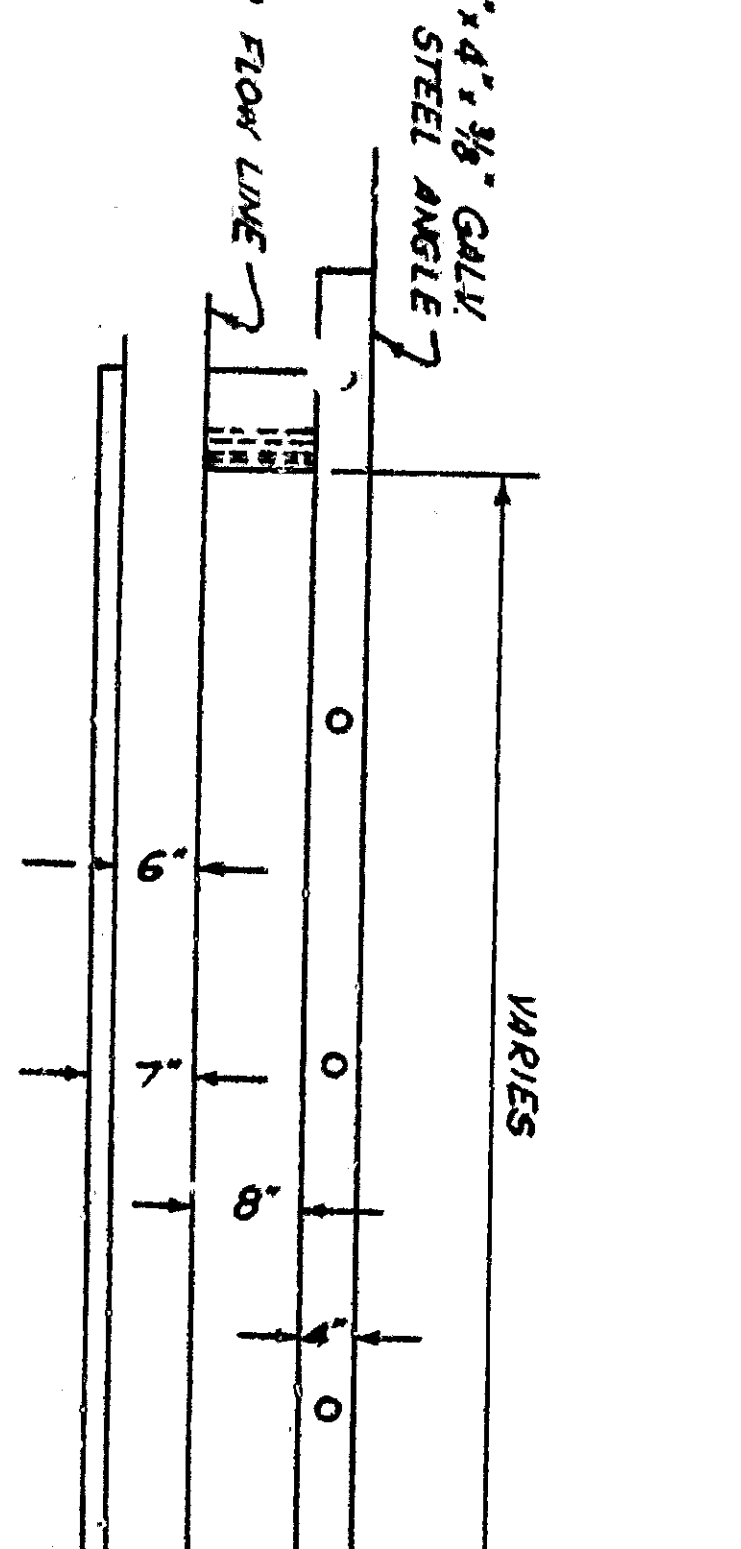
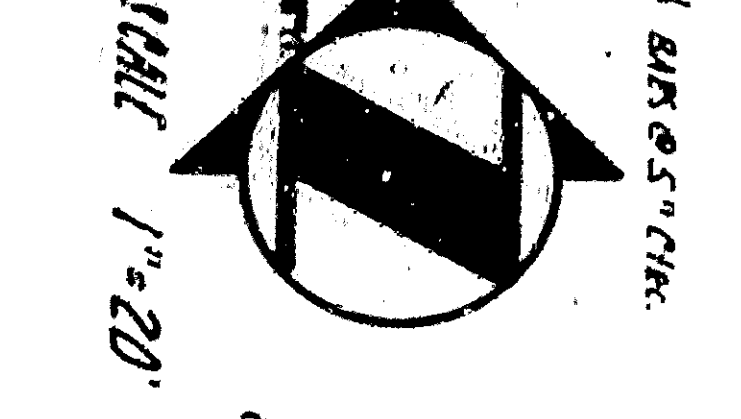
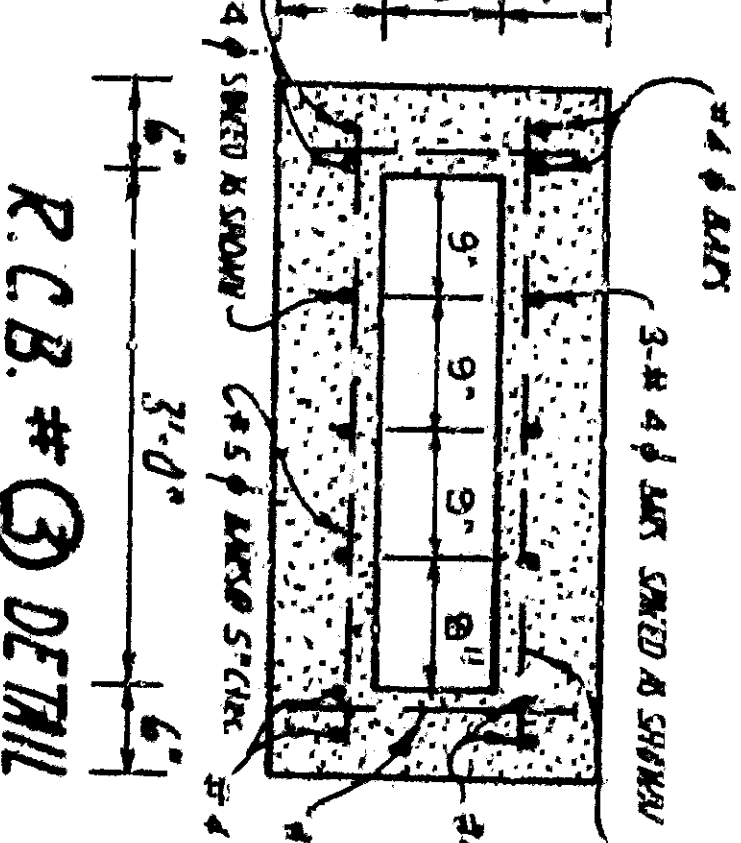
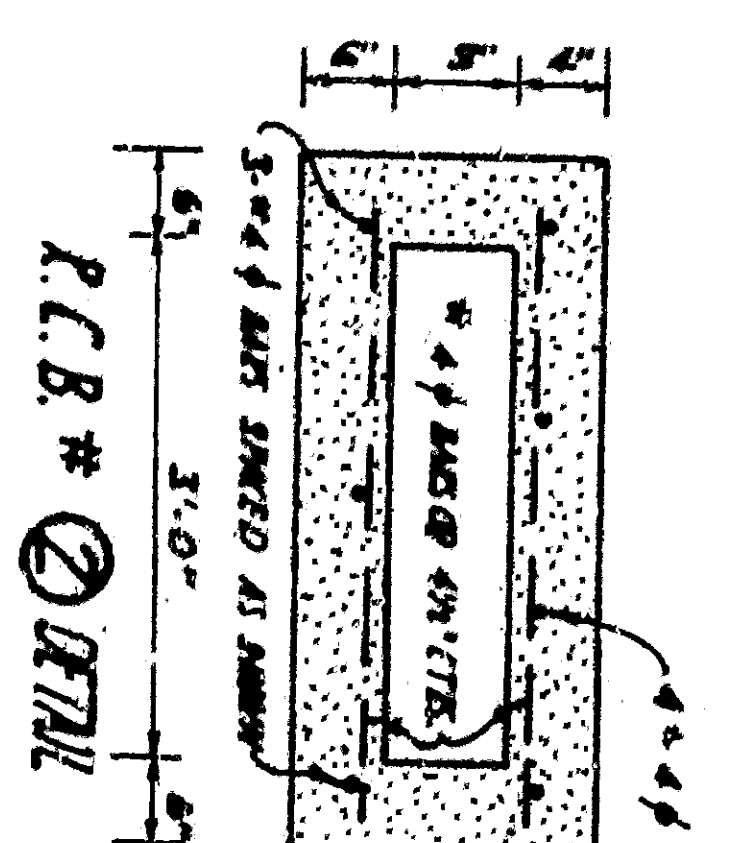
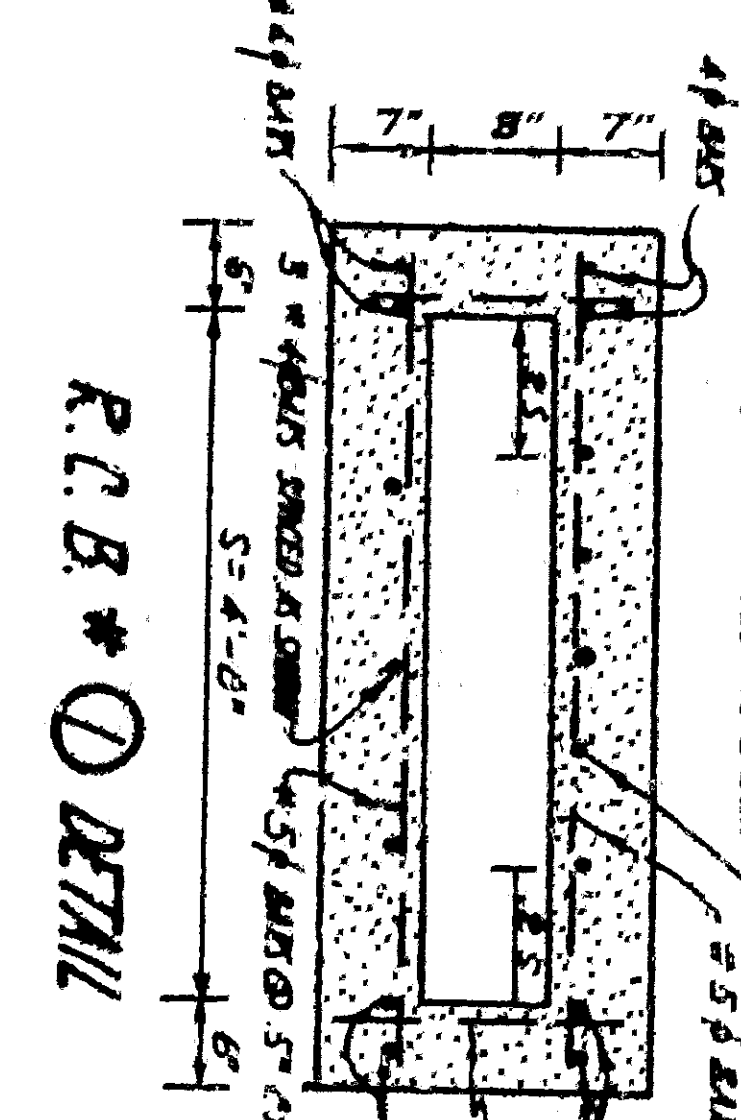
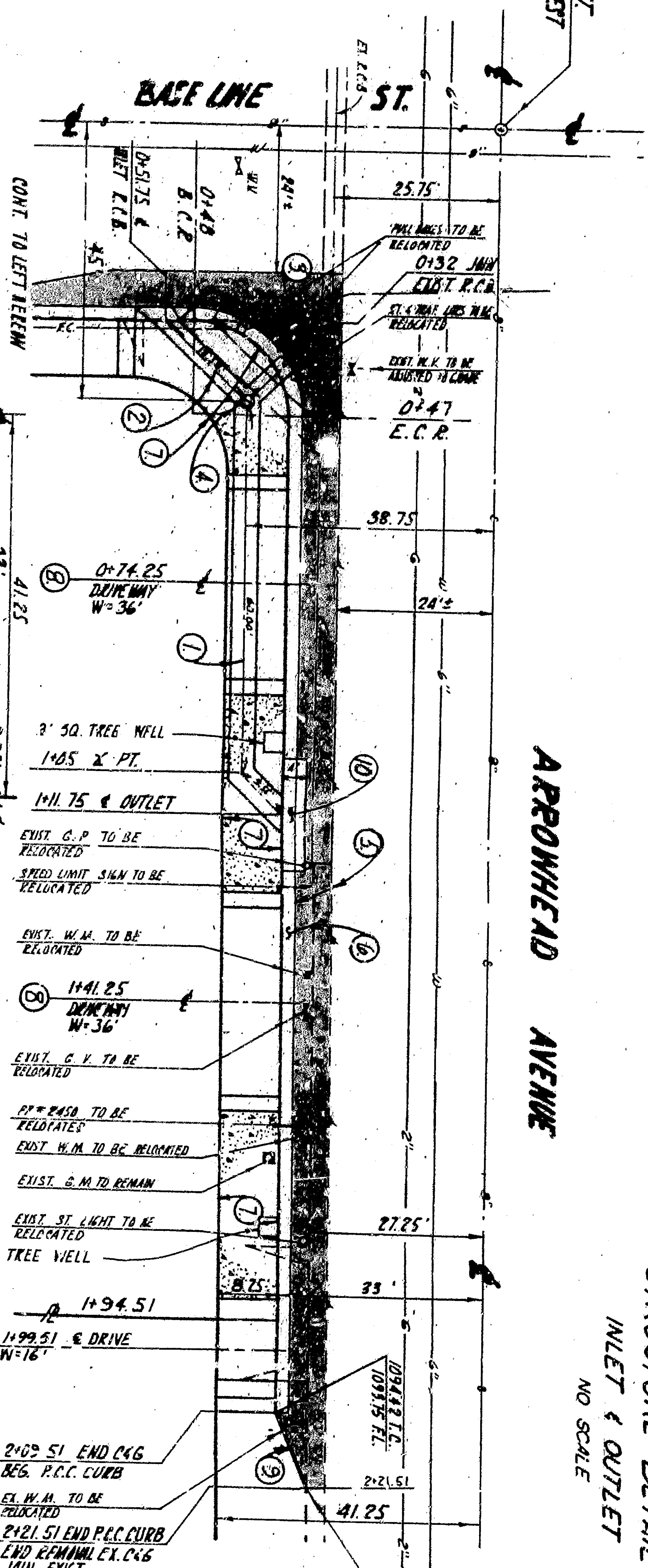
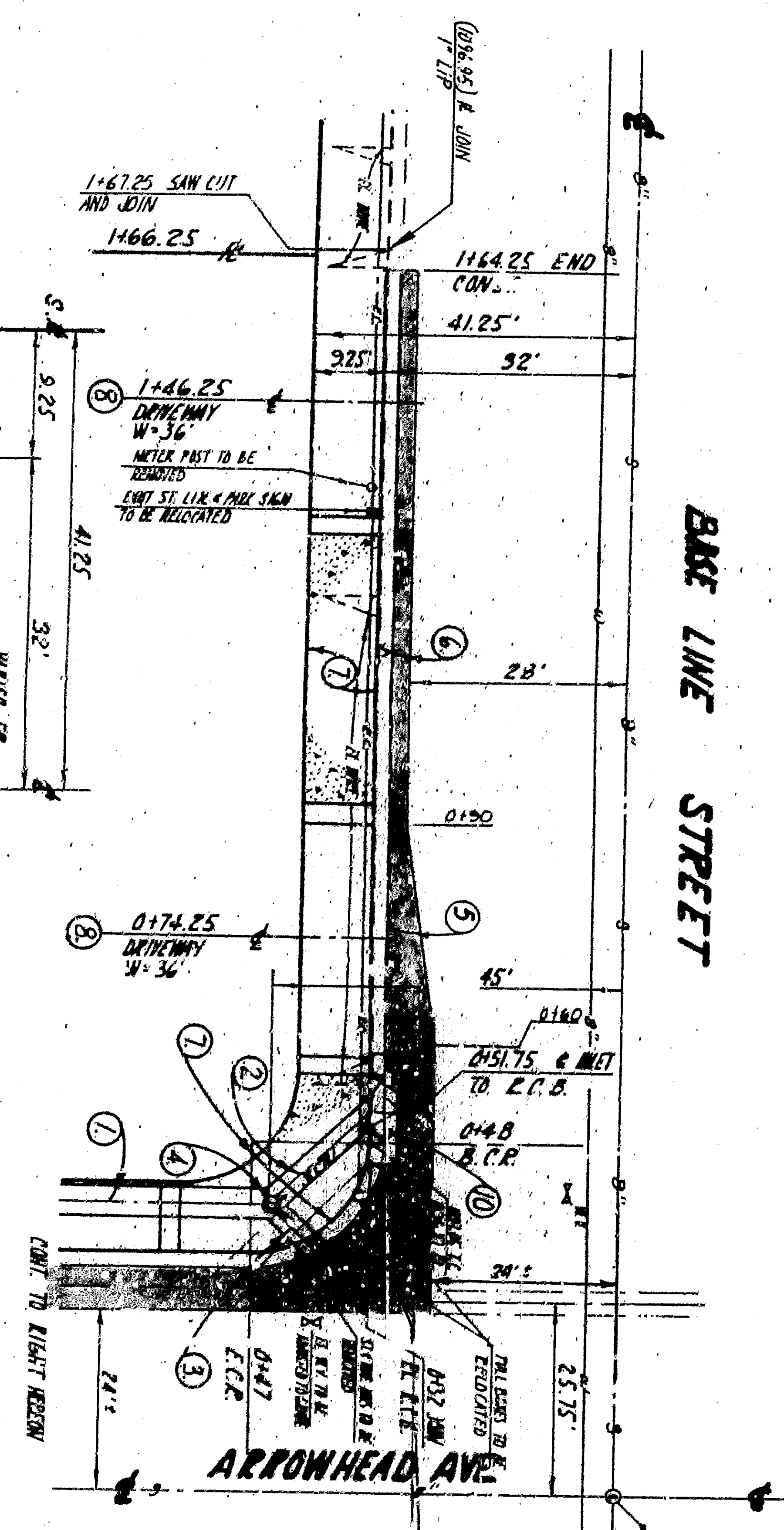
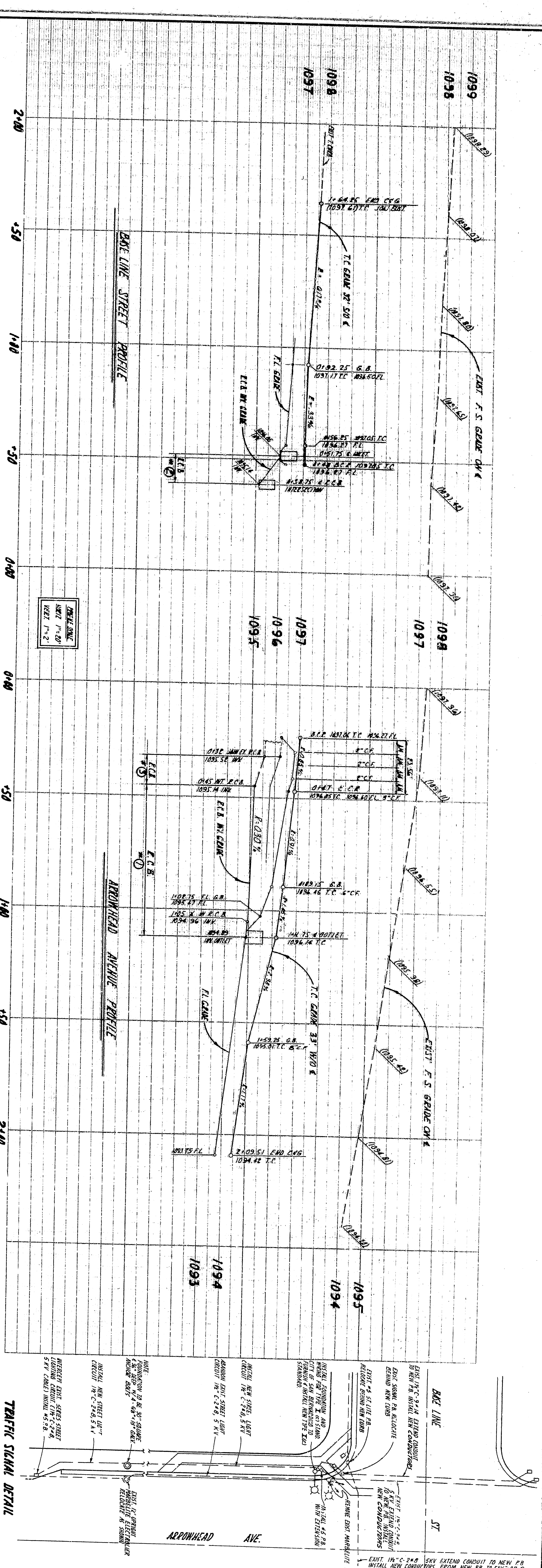
PRIVATE AND PUBLIC UTILITIES SHOWN HEREON REFLECT AVAILABLE LINES. THE ENGINEER SHALL BE RESPONSIBLE FOR LOCATING ALL LINES AND DEEPENING THE HOLE AND FOR THE PROTECTION OF THESE LINES.

ALL WORK SHOWN ON THESE PLANS SHALL BE DONE IN ACCORDANCE WITH APPLICABLE PROVISIONS OF STANDARD SPECIFICATIONS NO. 2371 AND STANDARD DRAWINGS NO. 2301 ON FILE IN THE OFFICE OF THE CITY ENGINEER.

NO.	REVISION	DATE
1	AS SHOWN	1967

DESIGNED BY: *[Signature]*  
 CHECKED BY: *[Signature]*  
 DRAWN BY: *[Signature]*  
 SCALE: 1" = 20'

HOLM, TAIT & ASSOCIATES  
 280 NORTH WILSHIRE, ANAHEIM, CALIF.  
 PREPARED UNDER THE SUPERVISION OF  
 CITY ENGINEER JAS. J. JONES  
 DEPARTMENT OF ENGINEERING  
 CITY OF SAN BERNARDINO  
 SHEET 17  
 SWATHWELL CO. OF ARROWHEAD AND BASE LINE ST.



**CONSTRUCTION NOTES**

1. CURB R.C.B. PER DETAIL # 1 HEREON
2. CURB R.C.B. PER DETAIL # 2 HEREON
3. CURB R.C.B. PER DETAIL # 3 HEREON
4. CURB SURFACE IN R. TYPICAL OVER ALIQUOTA PAVEMENT
5. CURB 3" A.C. PAVEMENT OVER 6" ASPHALT BASE
6. CURB 5" A.C. PAVEMENT OVER 6" ASPHALT BASE
7. CURB 4" TYPICAL P.C.C. UNDERLAY
8. CURB 8" P.C.C. UNDERLAY PER CITY DWG # 2371-F
9. CURB LEVEL DEPRESSION PER CITY DWG # 2301

PRIVATE AND PUBLIC UTILITIES SHOWN HEREON REFLECT AVAILABLE LINES. THE ENGINEER SHALL BE RESPONSIBLE FOR LOCATING ALL LINES. THE ENGINEER SHALL BE RESPONSIBLE FOR LOCATING ALL LINES. THE ENGINEER SHALL BE RESPONSIBLE FOR LOCATING ALL LINES. THE ENGINEER SHALL BE RESPONSIBLE FOR LOCATING ALL LINES.

DESIGNED BY	REVISED	DATE
DRAWN BY	APPROVED	DATE
CHECKED BY	CITY ENGINEER	1967
RECOMMENDED BY		

HOLM, TAIT & ASSOCIATES  
280 NORTH WILSHIRE, ANAHEIM, CALIF.  
PREPARED UNDER THE SUPERVISION OF  
CITY ENGINEER

CITY OF SAN BERNARDINO  
DEPARTMENT OF ENGINEERING  
SCALE OF 1" = 40'

SUBMITTAL CO. OF ARROWHEAD AND BASE LINE ST.